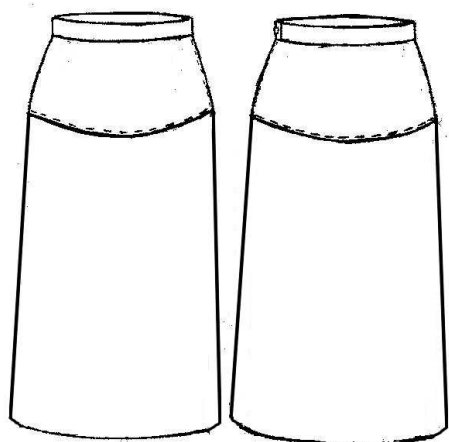
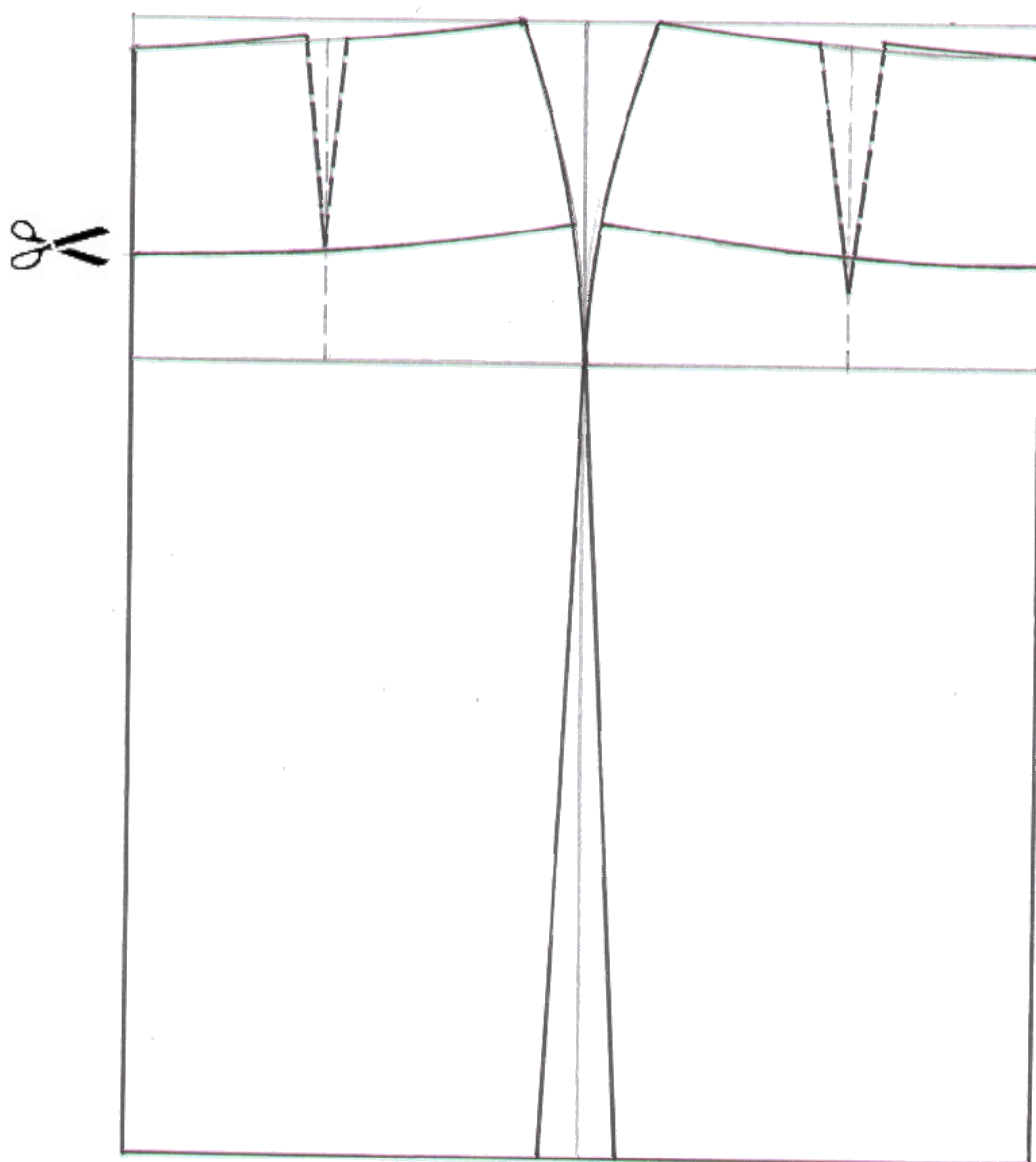


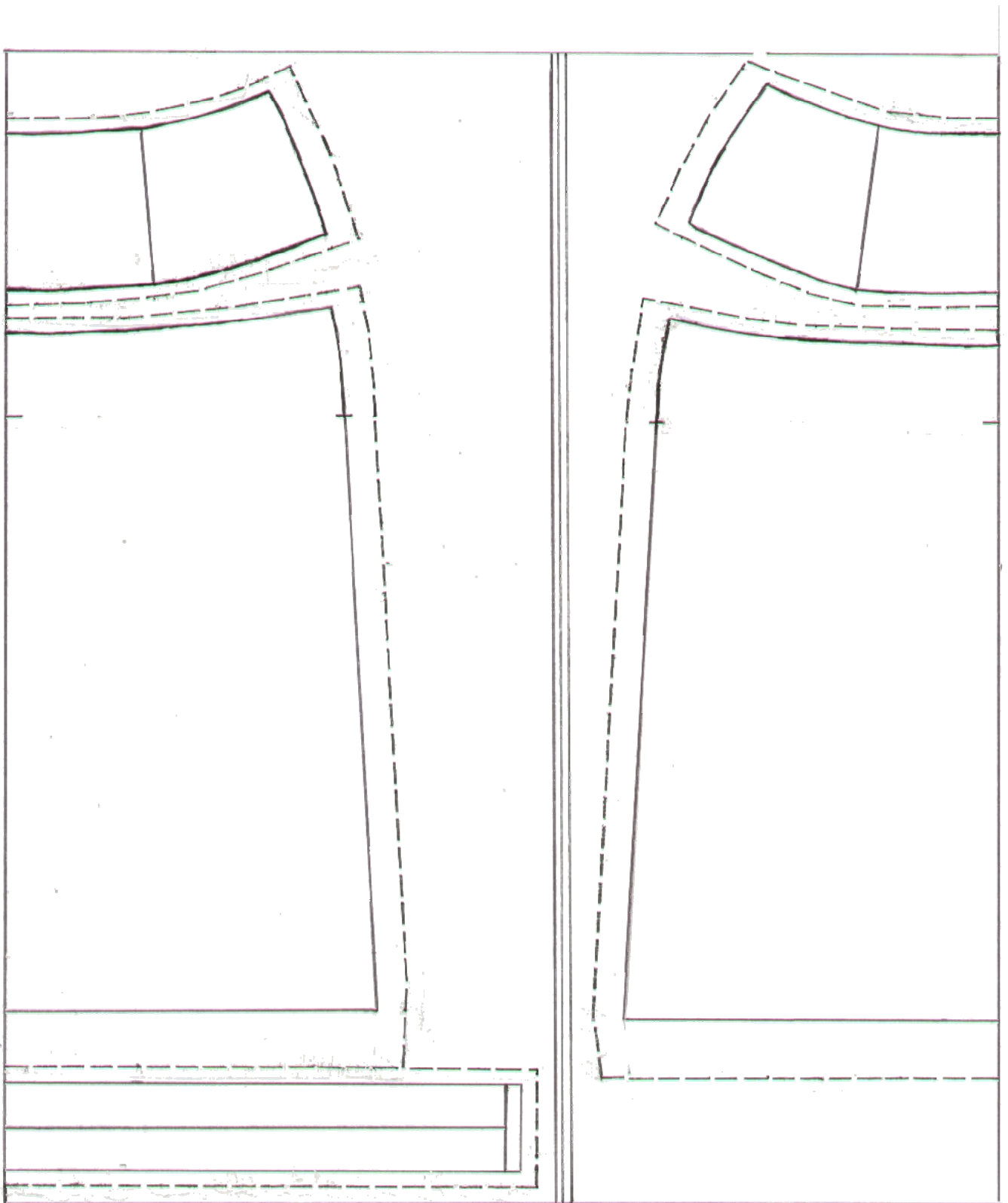
GONNA CON BASCHINA



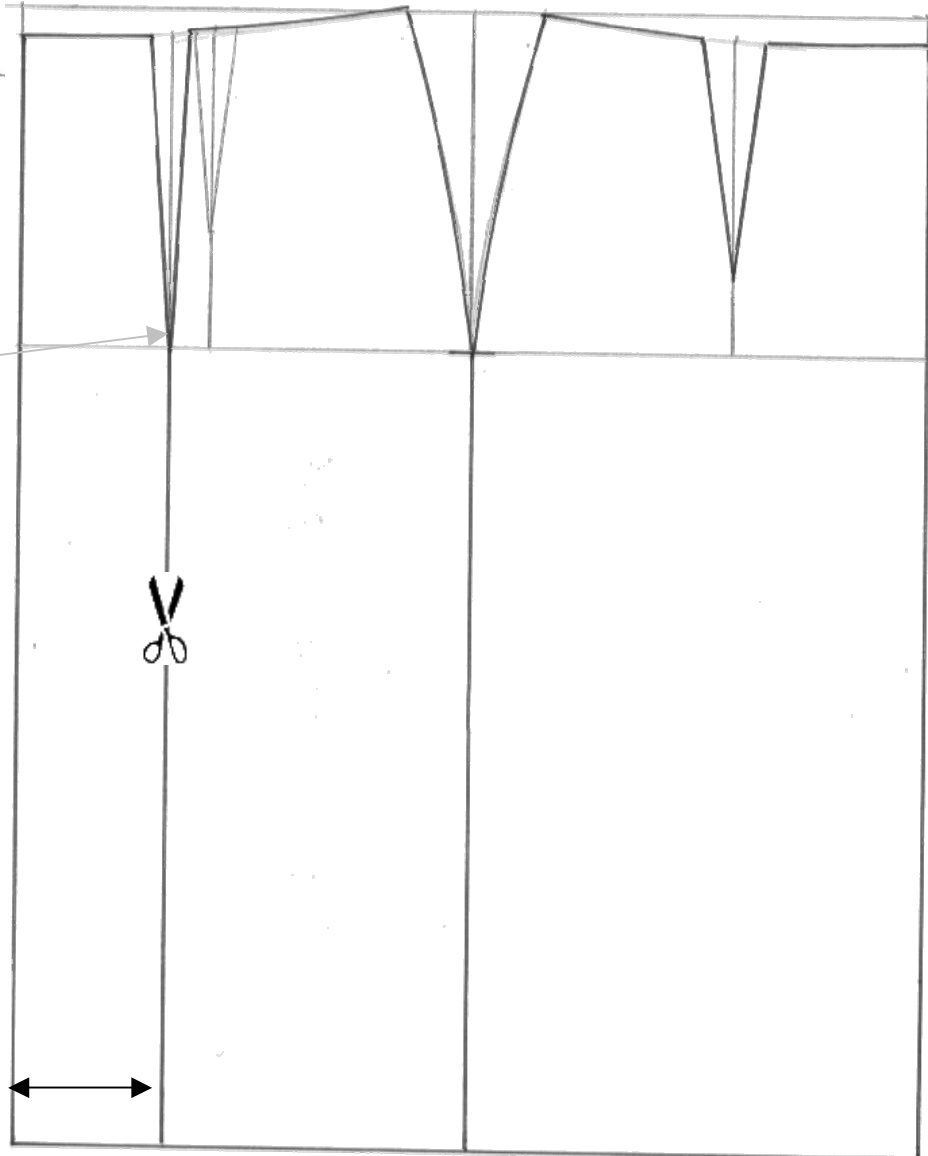
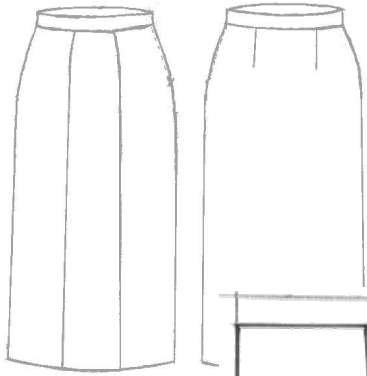
LE RIPRESE DAVANTI E DIETRO,
VENGONO CHIUSE IN CARTA,
PRIMA DEL POSIZIONAMENTO



POSIZIONAMENTO GONNA CON BASCHINA



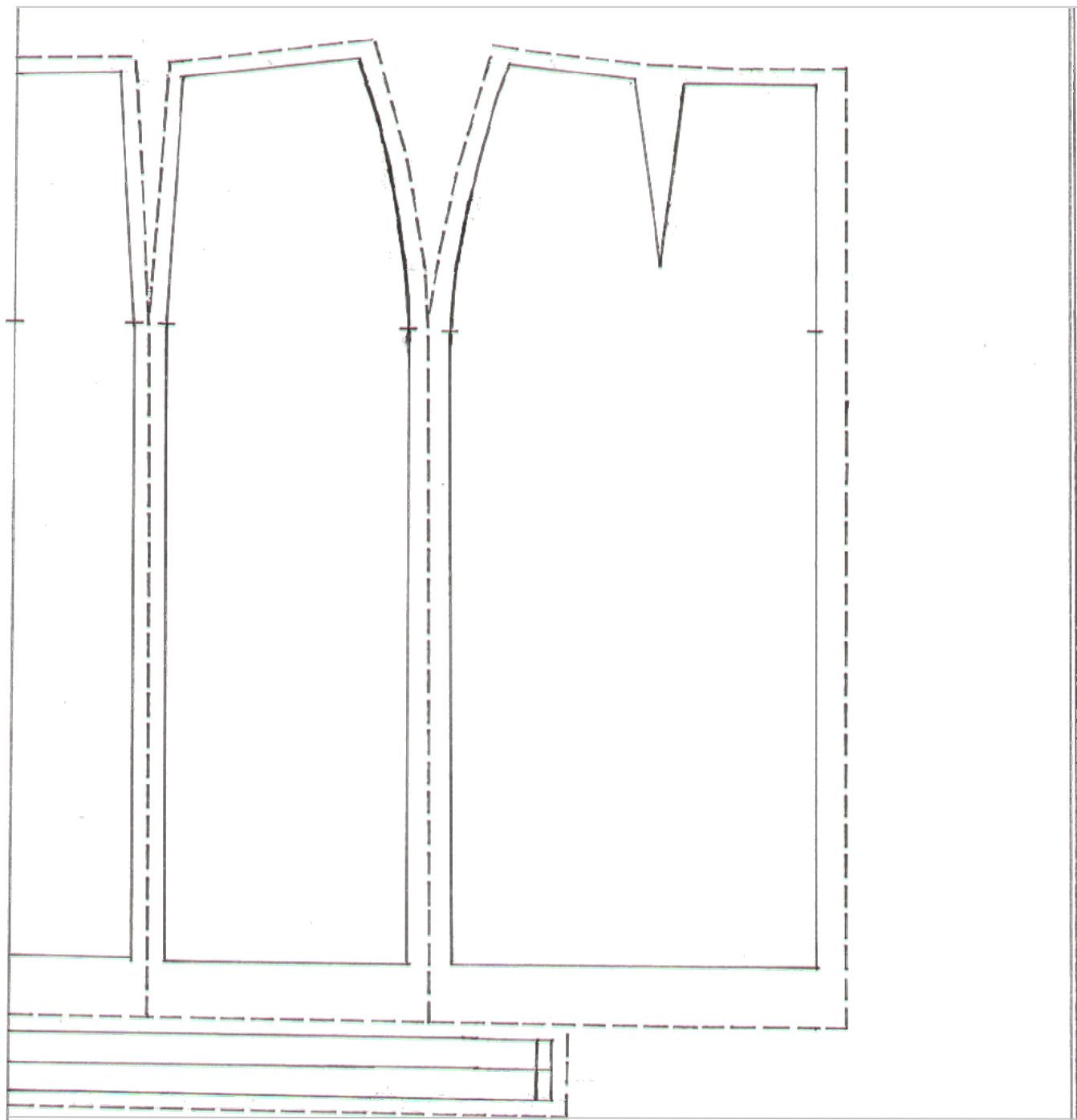
GONNA CON TRE TELI



Ripresa prolungata
fino al bacino

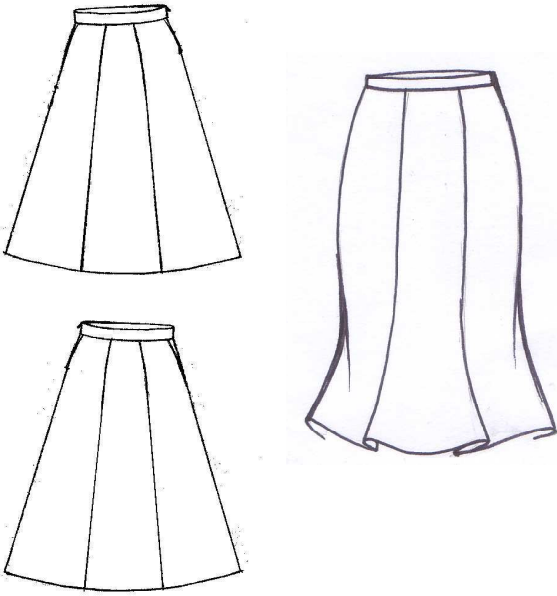
N.B. Perché il telo si trovi giusto al centro del davanti, si suddivide la semicirconferenza bacino in 3 parti ($48:3 = 16\text{cm}$; $16\text{cm} : 2 = 8\text{ cm}$).

POSIZIONAMENTO GONNA CON TRE TELI

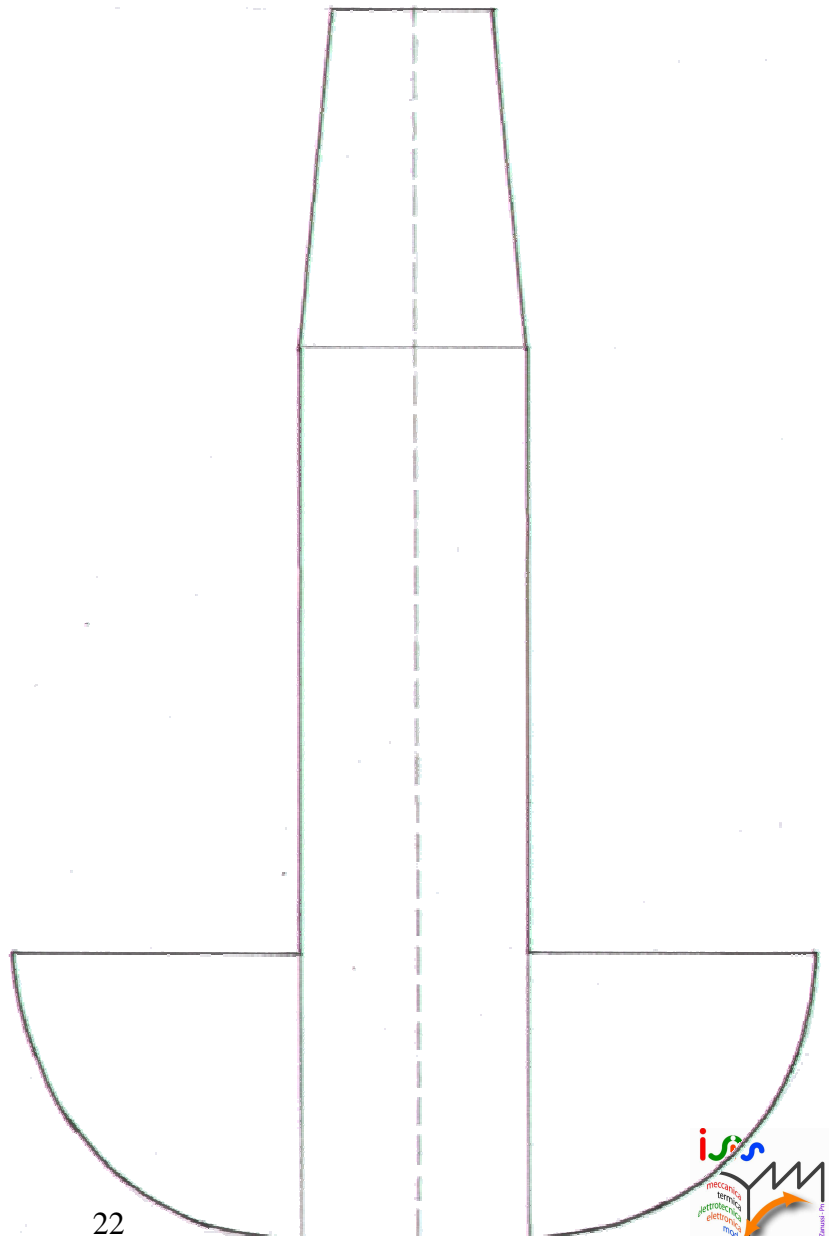
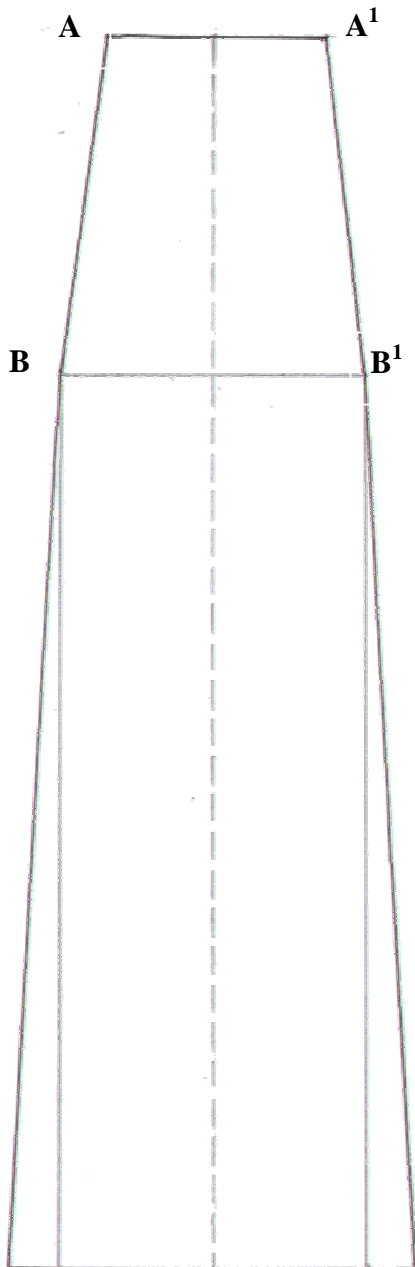


Il posizionamento del cartamodello posteriore è uguale a quello anteriore.

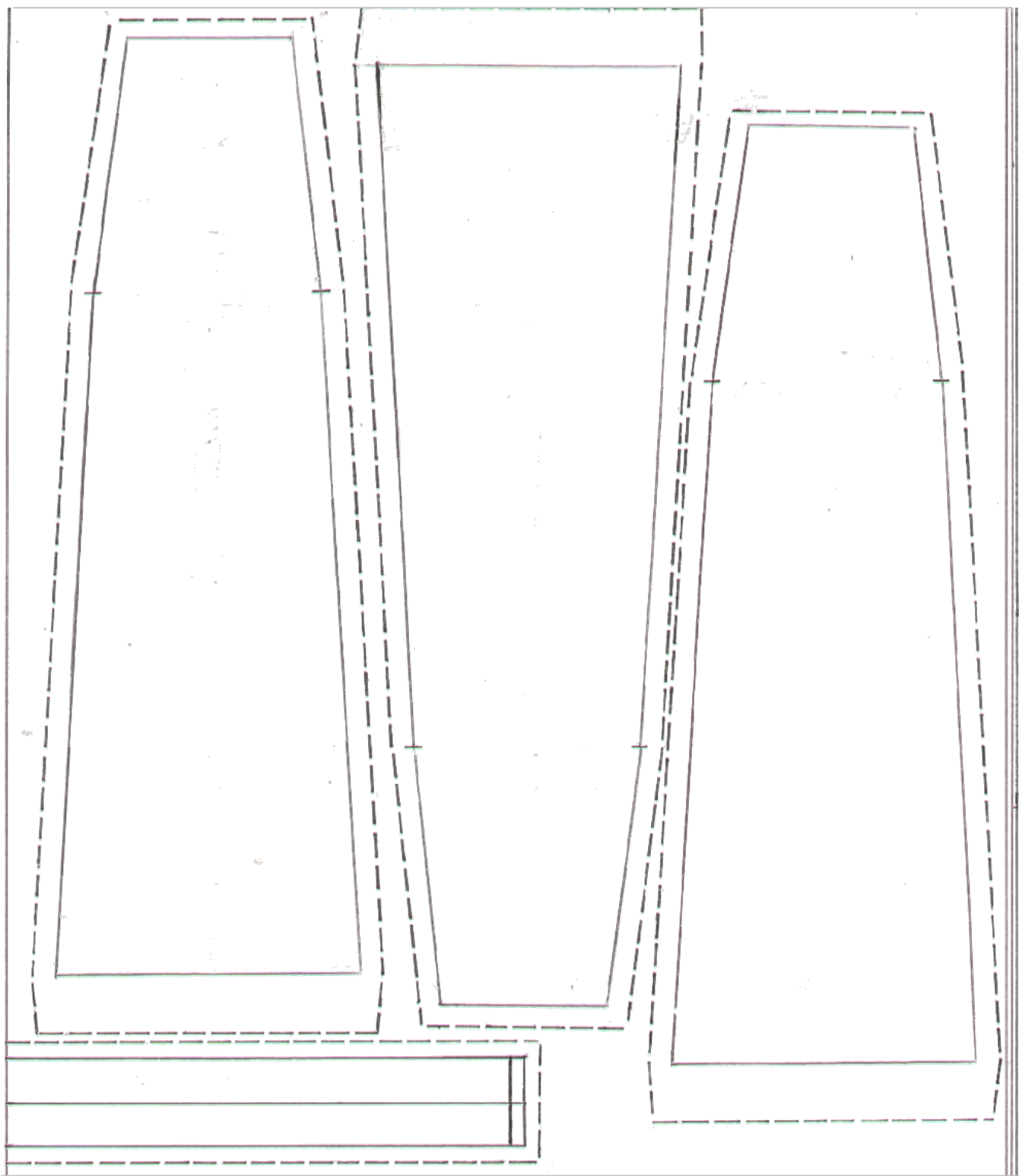
GONNA CON TELI E GODET



LARGHEZZA TELO:
SEMICIRCONFERENZA
VITA : N° TELI $A=A^1$
SEMICIRCONFERENZA
BACINO : N° TELI $B=B^1$



POSIZIONAMENTO GONNA A TELI



POSIZIONAMENTO GONNA A GODET (scala 1:5)

